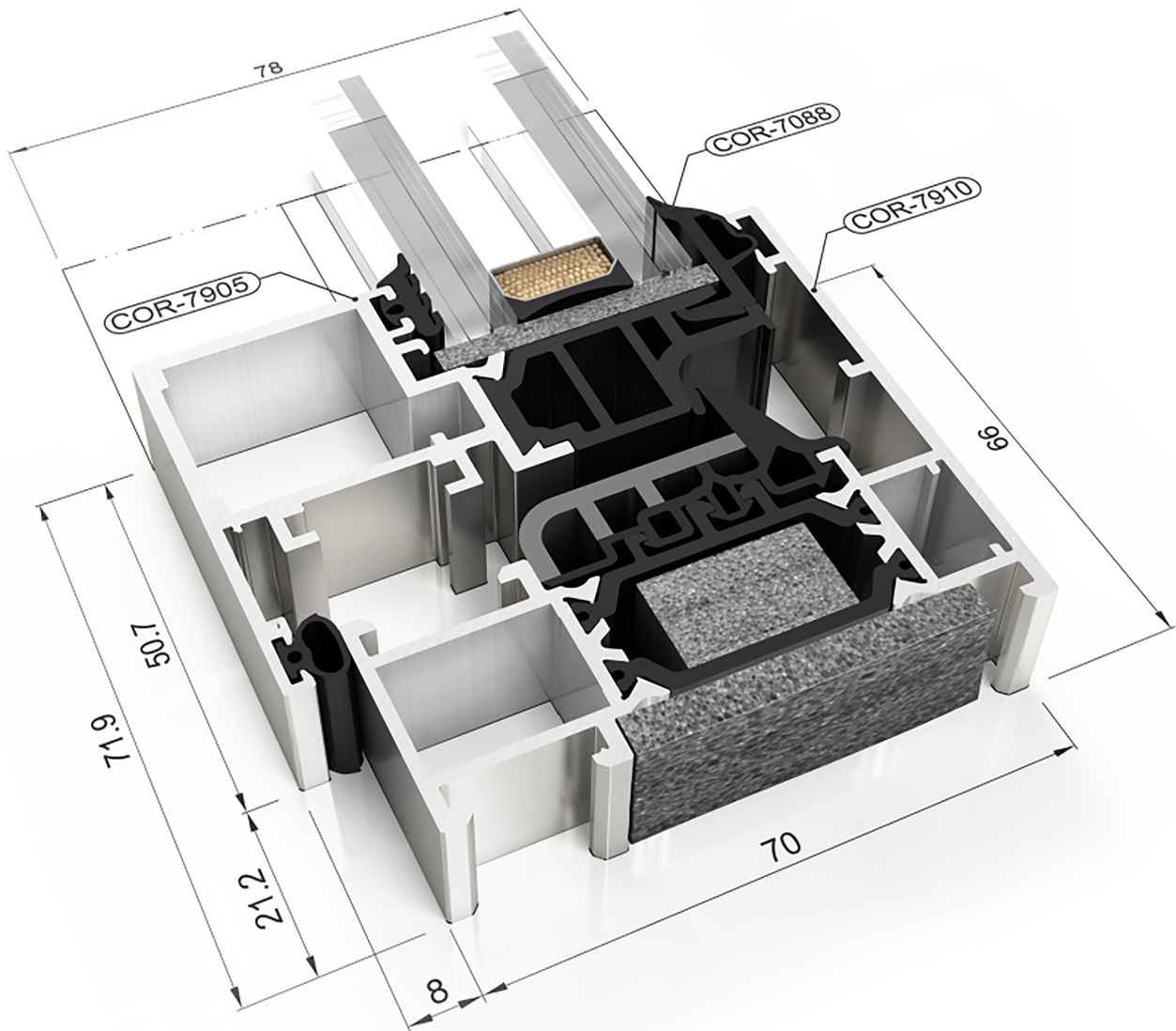


5 STAR VIEW ALUMINUM WINDOW AND BALCONY DOOR



The 5 Star View system is a high-performance aluminum-framed tilt and turn and fixed window and door system. It is a minimalistic design for comfort and quality, durability, energy performance and security.

Energy Efficiency

Thermal Transmission Coefficient

Uw from 1.0 (W/m²K)

Please consult typology, dimensions and glazing

Acoustic Insulation

Maximum glazing: **40 mm**

Maximum accoustic insulation: **Rw = 46 dB**

Categories Achieved at Test Center

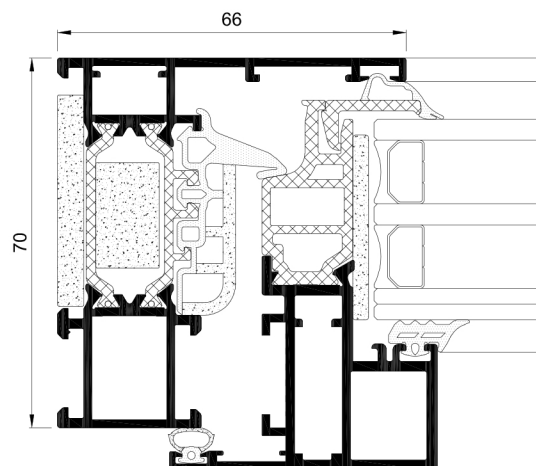
Protection against atmospheric agents

Air permeability (UNE-EN 12207:2000): **Class 4**

Water tightness (UNE-EN 12208:2000): **Class E₁₆₅₀**

Wind resistance (UNE-EN 12210:2000): **Class C5**

Reference test window 1.23 x 1.48 m. 1 Sash.



Sections	Frame 70 mm Sash 70 mm	Extrusion Alloy	6063 T-5
Profile Thickness	Window 1.9 mm	Polyamide Strip Length	Polyamide 6.6 reinforced with 25% fiberglass: 35 mm
Maximum Dimensions	Width (L) = 1,300 mm Height (H) = 2,400 mm	Gaskets	EPDM triple gasket
Maximum Weight/Sash	160 Kg	Foams	Perimeter polyolefin foam in glazing rebate zone
Please consult regarding maximum weight and dimensions according to types		Opening Possibilities	
Finishes	Colour powder coating (RAL, mottled, rough...) According to Qualicoat >60 microns Wood effect powder coating According to Qualideco standard Anodized According to Ewwa Euras Standard Class 15 Optionally Class 20 and 25 Optionally bicoloured	Inwards	Side hung, tilt and turn&tilt
		Outwards	Side hung, top hung and pivoting on horizontal or vertical axis
		AVIS Technique Certificate	DTA certification from CSTB lab Ref. 6/17 - 2363
Hardware	Optionally concealed hinges Optionally security hardware		