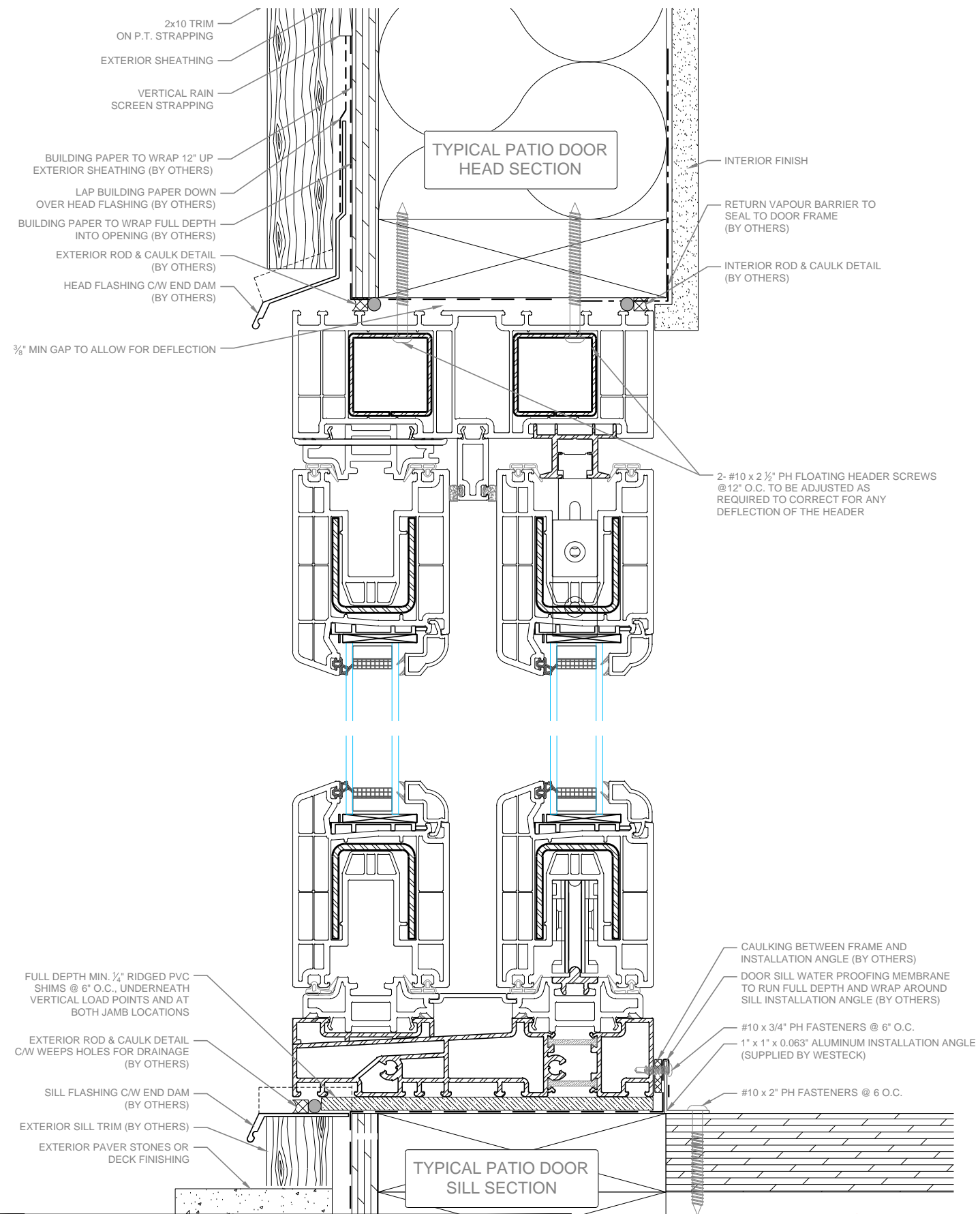
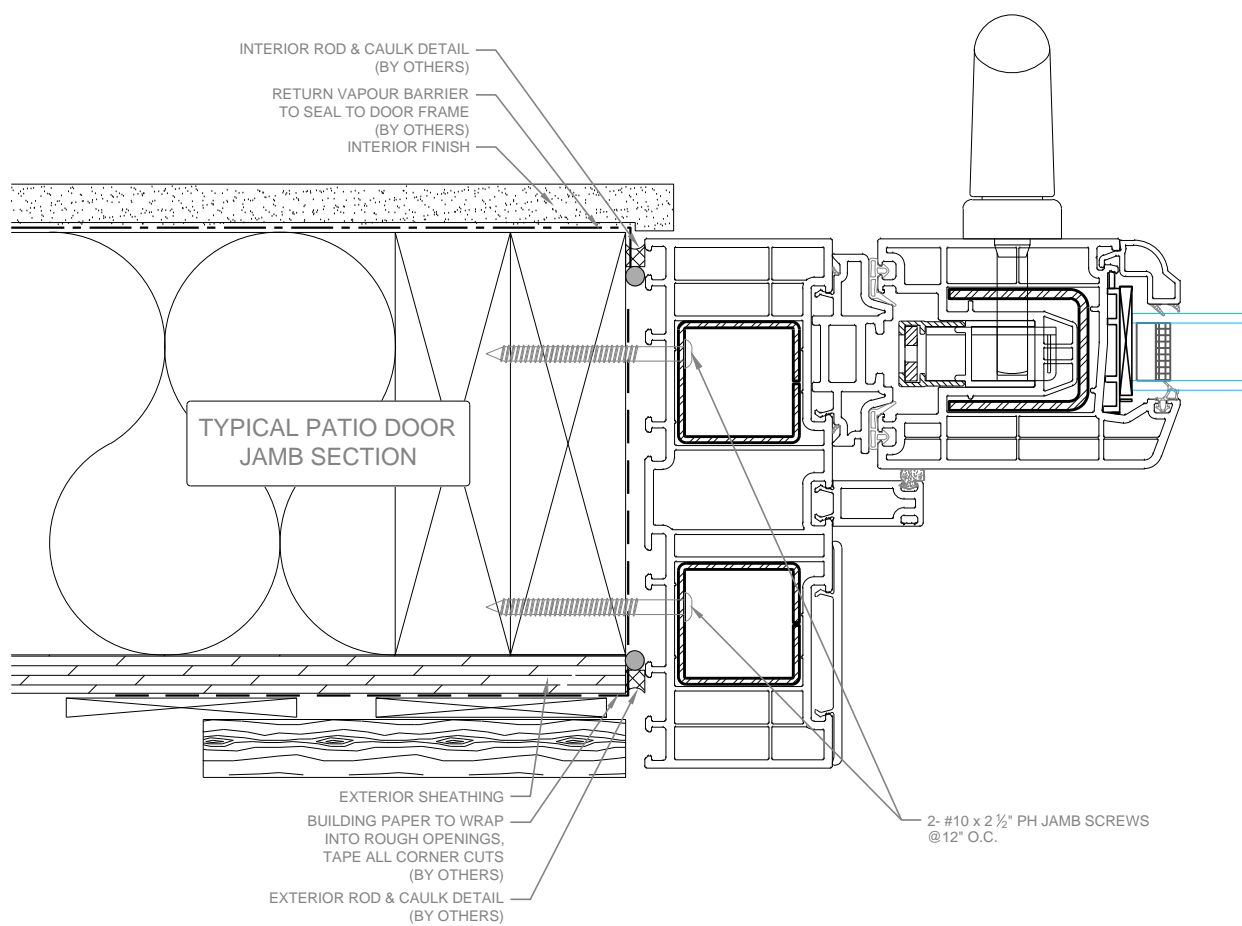


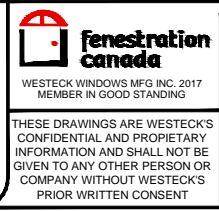
DETAILS ARE INTENDED TO SHOW A TYPICAL STRUCTURAL FASTENING METHOD OF RETAINING WINDOWS AND DOORS FOR WARRANTY PURPOSES ONLY. WATER PROOFING ENVELOPE DETAILS ARE TO BE COMPLETED BY OTHERS AND ARE NOT THE RESPONSIBILITY OF WESTECK WINDOWS & DOORS.

SEE PROJECT SPECIFIC ARCHITECTURAL AND ENVELOPE ENGINEERING DETAILS THAT PERTAIN TO WATERPROOFING SEQUENCING DETAILS. IT IS THE SOLE RESPONSIBILITY OF THE CONTRACTOR AND PRODUCT INSTALLER TO ENSURE ALL PRODUCTS ARE INSTALLED LEVEL, PLUMB AND SQUARE TO ALLOW FOR PROPER OPERATION AND FULL PRODUCT WARRANTY.

WESTECK WINDOWS & DOORS NEITHER ENDORSES NOR APPROVES OF ANY FASTENING METHOD THAT DEVIATES FROM THESE DETAILS WITHOUT WRITTEN CONSENT.



FILE PATH: F:\Common\Technical\Technical Document Center\Website Items\Patio Openings\Rev XL Lift & Slide\Installation Detail\_LAST SAVED: 2016-03-13 3:13 PM



REV.	DATE	DESCRIPTION	CHECKED	APPROVED
△	-	-	-	-
△	-	-	-	-
△	-	-	-	-
△	-	-	-	-
△	-	-	-	-

Revolution XL - Part 9 Typical Installation Detail

OX Configuration

Wood Sill

SCALE	1:4
DATE	-
DRAWN BY	MATTR
SALES REP	-

**DRAFT**  
FOR DISCUSSION PURPOSES ONLY

DRAWING NUMBER  
**D1**