



## 4000-5000 Series

---

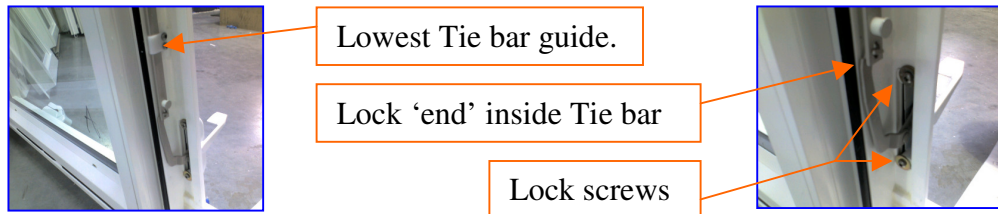
### Replacing locks.

#### Multipoint

Open window, remove two screws on lowest tie bar guide, remove two screws behind lock. Twist lock so that the end comes away from the tie bar. (Note the tie bar may fall) Insert new lock. Twist lock so that its end is inside the tie bar end. Push up tie bar, ensure the bar is back in the top guide. Refasten lower tie bar guide. Fasten screws behind lock, close window.

#### Awning

Open window, remove two screws behind lock. Pull lock out. Insert new lock. Fasten screws behind lock, close window.

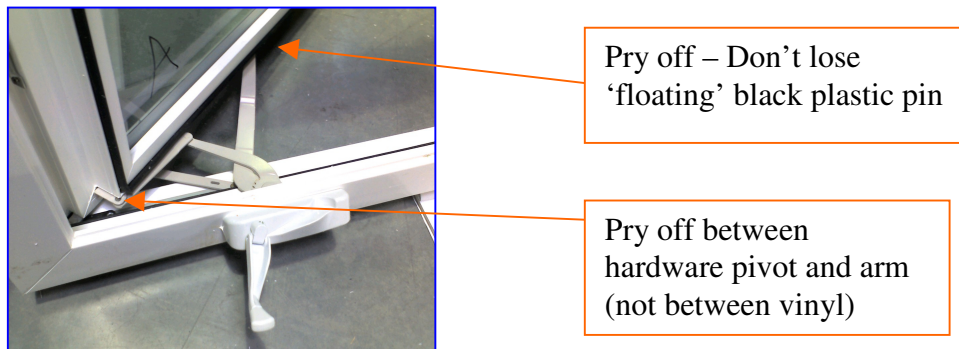


To remove a vent from a frame. (A small prybar is required.)

#### Roto Gear

Crank open vent to about halfway point. If restricted, slide sheath back on restrictor hinge arm and lower off of pin.

Use prybar to pop roto arm from 'floating' pin in track on sash vent at the bottom. (The floating pin should be black plastic, be certain not to lose it, as when not attached it can come free of the lower track) Use prybar to get pin arm off of sash pin located on corner of sash. The sash should now be free of the roto mechanism, but not of the hinges.



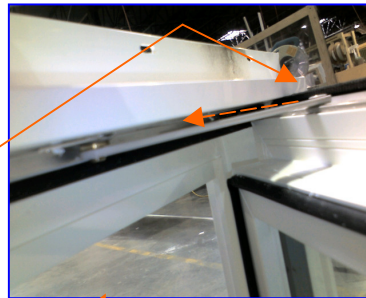
### Removing vent (hinges)

\*\*\* **CAUTION!** Please note that due to sash weight, this operation can be dangerous. Westeck assumes no liability in case of injury. If you have any doubts whatsoever, please consult a professional.

This must be completed carefully lest you or the vent fall from building!

\*\*\* **CAUTION!**, once you have begun this process, the vent will NO LONGER BE SECURE!! With the vent nearly closed, hold the open side firmly with one hand. Use a pry bar to pop hinge arm off of LOWER track pin (this is also where adjustments are made – on upper and lower pins), then off the upper track pin. **The vent in this position is at risk of falling!** Grip both sides of vent and slide sideways so that the hinge arm plastic pivot hardware reaches the point of the stainless steel track that is closest to the brass pin. The plastic pivot should now come free from the track. Lower and tilt sash so that it can be pulled inside.

Pry between pin and hinge arm, top and bottom hinge. (The brass pin is also an adjustment mechanism.) \*\*\***Caution – as soon as you do one, sash is not secure!**



Once hinge arms are popped off brass pins, slide the black hinge pivot to area beside brass pin where it will come loose from track. When re-installing, put in top pivot (slightly) first.

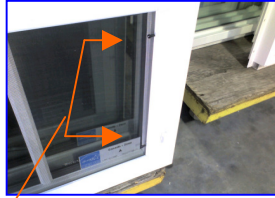
### Screens

Removal - Pull two pins simultaneously side opposite of lock, and pull screen toward you. The screen should be loose. To re-insert, put screen, lock side first, sideways into opening. Once the pins are in the holes on that side, grip pins on opposite side and pull on them while pushing screen into opening. Release pins. The screen should now be hung.

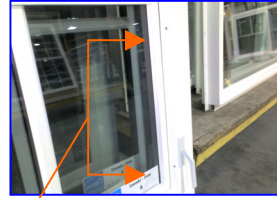


**Installing new screen.**

Put screen, lock side first, sideways into opening. Grip pins on opposite side and pull on them while pushing screen into opening. The screen should be in opening. Tap pins gently with a mallet to mark frame for drilling. Remove screen, drill 3/16 holes where the marks appear, being careful to only go through one vinyl wall. Re insert screen. Screen installation is now complete.



Tap lightly with mallet to mark for screen holes.

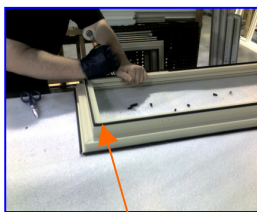


Drill holes (2 per side 3/16") and reinsert screen

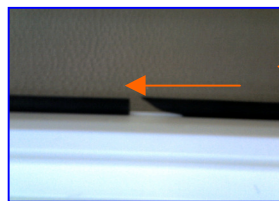
**Removing/Installing bulb seal and weatherstrip.**

Using olfa knife, cut old weatherstrip/bulbseal along track and remove. Use a roller and roll in new weatherstrip/bulbseal to start. Grip the started end with one hand and continue rolling in rest of weatherstrip/bulbseal. Cut to size when full perimeter done and finish rolling in end.

Similarly with bulb seal, but at the corners clip out a small piece of the bulb seal bottom – (a harder plastic which is inserted into the track) while maintaining integrity of bulb itself and keeping it in one piece all way round. At the end, clip bottom to match beginning point, and clip bulb seal at 45 degrees and insert this cleft into starting point bulb seal hollow. Ensure bulb seal track is fully in channel all way round.



At corners clip out bottom of bulb seal and maintain one piece all way round.



45 degree cut slides into starting point