



Building Tomorrow

Outswing | Passive

Wood Passive House
Certified Windows

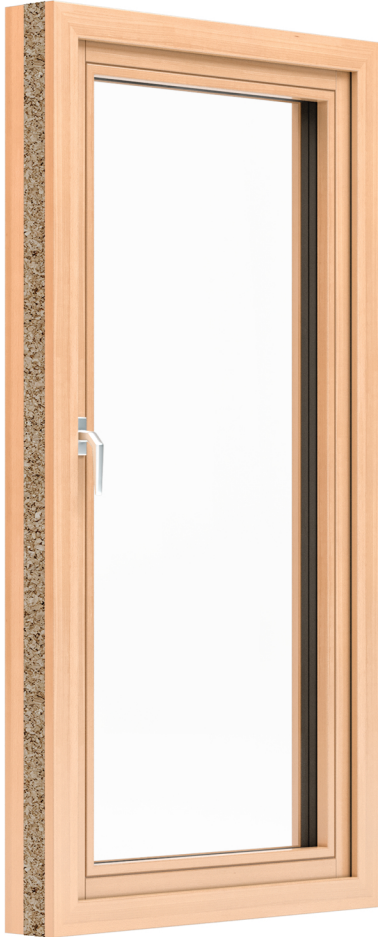
NEW Passive House | Certified Component



Westeck Windows and Doors is proud to introduce the Passive House Certified 6100 Series wood outswing and picture window.

Low profile frames, outswing operation, and the integration of 100% renewable cork insulation create a North American designer and consumer friendly high performance option for the Passive House market.

NEW Passive House | Wood Outswing



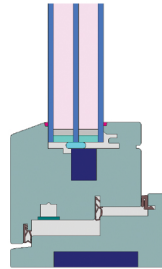
- 100% Eco-Friendly Thermacork Insulator
- Triple Pane $U_w = 0.80$
- Sleek Frame System - Various Finishes Available



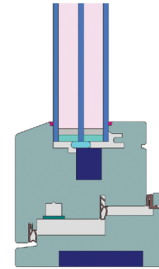
This certificate was awarded based on the following criteria for the cool, temperate climate zone

Comfort $U_W = 0.80 \leq 0.80 \text{ W/(m}^2 \text{ K)}$
 $U_{W, \text{installed}} \leq 0.85 \text{ W/(m}^2 \text{ K)}$
 with $U_g = 0.70 \text{ W/(m}^2 \text{ K)}$

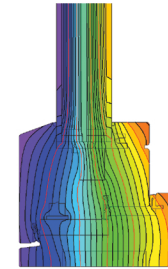
Hygiene $f_{Rsi=0.25} \geq 0.70$



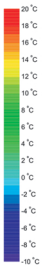
(Outward opening)



(Calculation model)



(Isothermal)



Frame values				Frame width	U-value frame	ψ -panel edge	Temp. Factor
				b_f mm	U_f W/(m ² K)	ψ_g W/(m K)	$f_{Rsi=0.25}$ [-]
Top	(to)			110	0.84	0.025	0.72
Side	(s)			110	0.82	0.025	0.72
Bottom	(bo)			110	0.82	0.025	0.72
Mullion 2 casements	(m2)			225	0.79	0.026	0.72
				Spacer: EnerEdge		Secondary seal: Butyl	

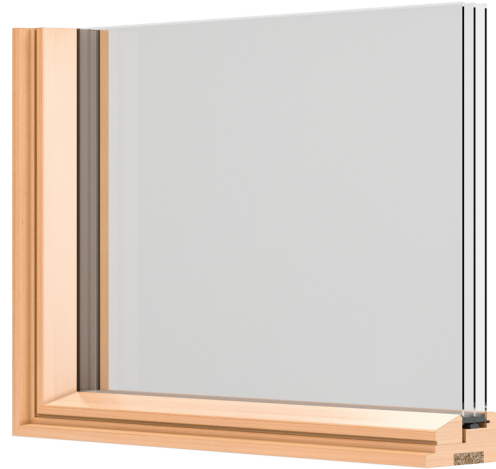
Passive House efficiency class					
	phE	phD	phC	phB	phA



NEW Passive House | Wood Picture



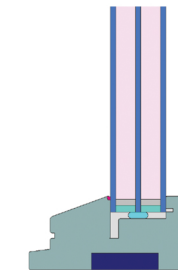
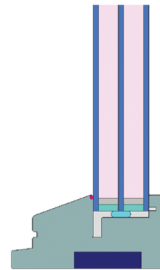
- 100% Eco-Friendly Thermacork Insulator
- Triple Pane $U_w = 0.80$
- Sleek Frame System - Various Finishes Available



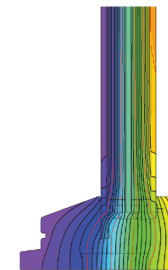
This certificate was awarded based on the following criteria for the cool, temperate climate zone

Comfort $U_W = 0.80 \leq 0.80 \text{ W/(m}^2 \text{ K)}$
 $U_{W, \text{installed}} \leq 0.85 \text{ W/(m}^2 \text{ K)}$
 with $U_g = 0.70 \text{ W/(m}^2 \text{ K)}$

Hygiene $f_{Rsi=0.25} \geq 0.70$



(Calculation model)



(Isothermal)

Frame values			Frame width	U-value frame	ψ -panel edge	Temp. Factor
			b_f mm	U_f W/(m ² K)	ψ_g W/(m K)	$f_{Rsi=0.25}$ [-]
Top fixed	(tof)		56	0.86	0.027	0.72
Side fixed	(sf)		56	0.86	0.027	0.72
Bottom fixed	(bof)		56	0.86	0.027	0.72
Mullion fixed	(m)		112	0.85	0.027	0.72
			Spacer: EnerEdge			
			Secondary seal: Butyl			

Passive House
efficiency class

phE

phD

phC

phB

phA

www.westeckwindows.com

www.passivehouse.com

cool, temperate climate



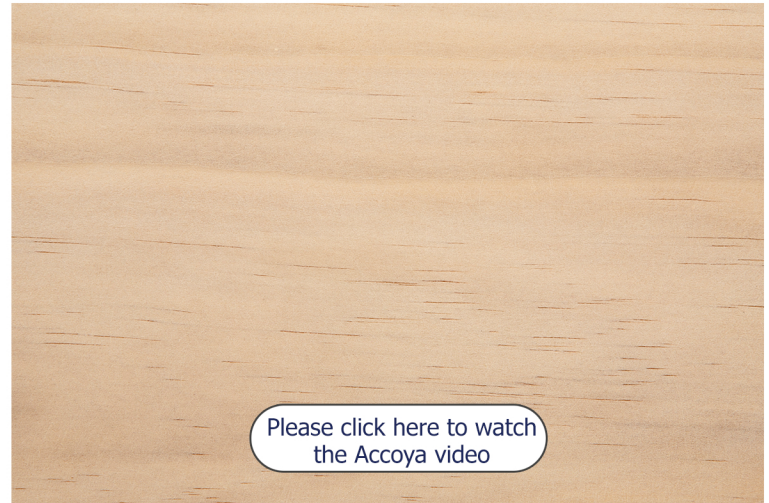
CERTIFIED
COMPONENT

Passive House Institute

Outswing Passive House 6100 series window is available in standard Hemlock/Fir as well as the optional upgrade to Accoya™

What is Accoya?

Accoya® is wood, but not as you know it. It is modified timber in which a process called acetylation, a cutting-edge patented technology, enables it to resist rot, defy the elements and stay strong for decades. Guaranteed for 50 years above ground and 25 years in ground or freshwater, its performance and properties are remarkable. From joinery for the home to bridges submerged in water, Accoya® long life wood is a leading material that stands up to every application challenge – decking, wood cladding and more.



It's entirely natural as it just comes from cork.

The binding agent that puts all this together to make it into a big block just comes from the material itself, there is no binder used, no polymer added and no adhesive.

Another advantage it has is that it is very thermally insulative, that you can put a flame on one side and on the other side you won't even feel the temperature. This can withstand some of the most stringent fire retardancy tests available, because of its material. Not only can it extinguish a flame, it also has the ability to not transfer heat to the top of the surface.

Using just a raw material that's harvested perhaps every 8 or 9 years, this is produced simply with a little bit of pressure and heat.

You don't need to use any other chemicals and at the end of its life, it can be composted and can be burned fairly easily as well.

It's a great sustainability story.



Please click here to watch
the Thermacork video

NEW Passive House | Wood Stains



Maple 6101



Clear



Pine 6101



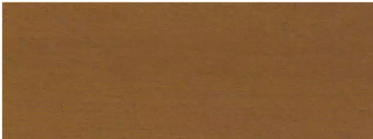
Light Oak 6103



Oak 6106



Fruitwood 6228



Pecan 6229



Golden Teak 6107



Chestnut 6102



Mahogany 6104



Teak 6105



Walnut Brown 5804



Acorn Brown 6227



Rosewood 6108



Customer Spec Custom

Westeck Windows Mfg. Inc.
Head Office, Plant & Showroom
8104 Evans Rd, Chilliwack
BC, V2R 5R8
Phone: 1-604-792-6700
Fax: 1-604-792-6714

Westeck Windows and Doors
Kelowna Showroom
#4 - 2720 HWY 97N, Kelowna
BC V1X 4J7
Phone: 1-250-862-3800
Fax: 1-250-862-3890

Westeck Windows and Doors
Nanaimo Showroom
4 - 4115 Mostar Road, Nanaimo
BC, V9T 5P8
Phone: 1-250-756-2922
Fax: 1-250-758-6725

Westeck Windows and Doors
Victoria Showroom
3942 Quadra St, Victoria
BC, V8X 1S6
Phone: 1-250-384-8881
Fax: 1-250-383-6729

Westeck Windows and Doors
Vancouver Showroom
1480 Kootenay St, Vancouver
BC, V5K 4R1
Phone: 1-604-298-6700
Fax: 1-604-298-5599

Westeck Windows Mfg. Inc.
Seattle Showroom
8902 122nd ave, Kirkland,
WA, 98033
Phone: 1-425-896-7025

Westeck Windows Mfg. Inc.
Bellingham Showroom
#102-4131 Hannegan Rd
Bellingham, WA, 98033
Phone: 1-425-577-3641



Phone: 1-604-792-6700
Fax: 1-604-792-6714
Toll-free (US/Canada): 1-877-606-1166
Email: sales@westeckwindows.com
Web: www.westeckwindows.com

**Windows and
Patio Openings**
Crafted For You