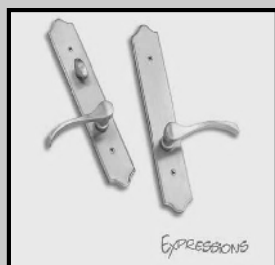
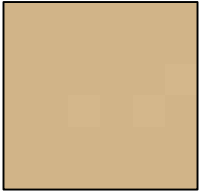


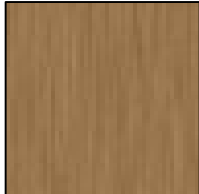
MULTI-POINT TRIM SET STOCKING SELECTION



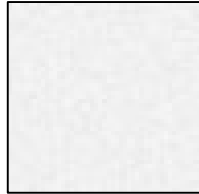
AVAILABLE FINISHES



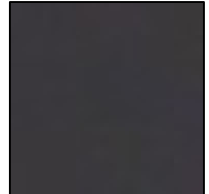
**Polished
Brass**



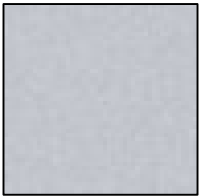
Antique



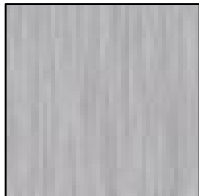
**Polished
Chrome**



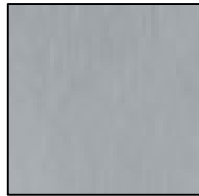
**Black
Powder
Paint**



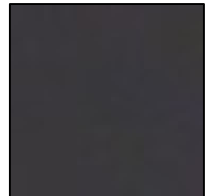
**Polished
Chrome**



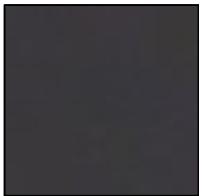
**Satin
Chrome**



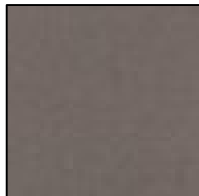
**Satin
Nickel
(Pewter)**



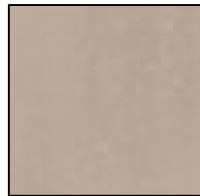
**Oil-
Rubbed
Bronze**



**Distressed
Oil Rubbed**



**Distressed
Nickel**



**Antique
Nickel**

FORGINGS FORGINGS

SWING DOOR
TRIM SET
HANDLE



****Oil Rubbed Bronze**

\$125.00 In Stock

**Distressed Rubbed Bronze
\$225.00 Non Stocking**

**Distressed Satin Nickel
\$225.00 Non Stocking**



10" Round Backplate with Forgings Lever

- All Prices are NET
- NON-Stock items require +/- 8-12 weeks for delivery
- Prices are subject to Change
- Handles are shipped in boxes to be installed by Customer
- Key-A-Like additional \$10 per handle
- Finish may vary from picture. Verify color from in showroom samples

EVOLUTIONS EVOLUTIONS

SWING DOOR
TRIM SET
HANDLE



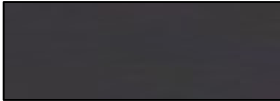
****Brushed Chrome**

\$110.00 In Stock



****Satin Nickel (Pewter)**

\$110.00 In Stock



****Black Powder Paint**

\$110.00 In Stock



White

\$184.00 NON Stocking



Chrome

\$184.00 NON Stocking



10" Half Round Backplate with Evolution Lever

- All Prices are NET
- NON-Stock items require +/- 8-12 weeks for delivery
- Prices are subject to Change
- Handles are shipped in boxes to be installed by Customer
- Key-A-Like additional \$10 per handle
- Finish may vary from picture. Verify color from in showroom samples

TRUE ELEGANCE TRUE ELEGANCE

SWING DOOR
TRIM SET
HANDLE



Antique Brass
\$147.00 NON Stocking



White
\$147.00 NON Stocking



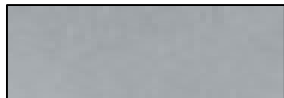
Polished Brass
\$147.00 NON Stocking



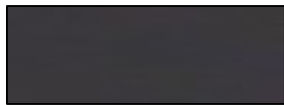
****Brushed Chrome**
\$147.00 NON Stock



****Oil Rubbed Bronze**
\$90.00 In Stock



****Satin Nickel**
\$90.00 In Stock



****Black Powder Paint**
\$90.00 In Stock



Chrome
\$147.00 NON Stock-

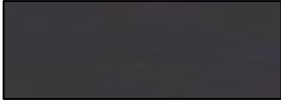


8" Arch Backplate with True Elegance Lever

- All Prices are NET
- NON-Stock items require +/- 8-12 weeks for delivery
- Prices are subject to Change
- Handles are shipped in boxes to be installed by Customer
- Key-A-Like additional \$10 per handle
- Finish may vary from picture. Verify color from in showroom samples

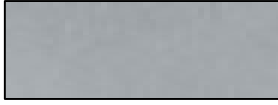
EXPRESSIONS EXPRESSIONS

SWING DOOR
TRIM SET
HANDLE



****Oil Rubbed Bronze**

\$154.00 In Stock



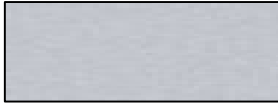
****Satin Nickel (Pewter)**

\$154.00 In Stock



Antique Brass

\$154.00 In Stock



Chrome

\$258.00 NON Stocking



****Black Powder Paint**

\$154.00 In Stock



Polished Brass

\$258.00 NON Stocking



12" Square Backplate with Expressions Lever

- All Prices are NET
- NON-Stock items require +/- 8-12 weeks for delivery
- Prices are subject to Change
- Handles are shipped in boxes to be installed by Customer
- Key-A-Like additional \$10 per handle
- Finish may vary from picture. Verify color from in showroom samples

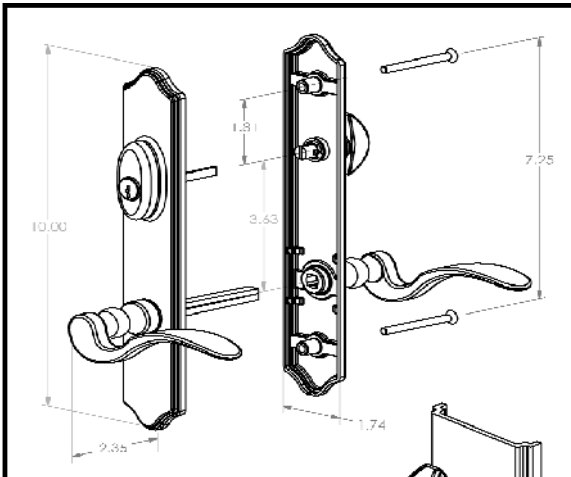
AESTHETICALLY PLEASING TRIMSET WITH NEW ERGONOMICS

KEY FEATURES

- The thumb-turn is located above the handle for convenience and ease of use.
- Premium appearance with first-class finishes
 - Finishes include Oil-Rubbed Bronze, Polished Chrome, Satin chrome, Satin Nickel (Pewter), Antique Polished Brass and many industry standard powder paint colors.
- The home-owner can visually verify that lock is engaged with 90-degree thumb-turn rotation
- With a Schlage C-keyway cylinder, homeowners can key all doors alike.
- Available in active, passive and dummy versions

PERFORMANCE AND OPERATION

- Patented split spindle design increases set screw penetration resulting in higher handle pull-off force
- Integrated key cylinder housing prevents air and water infiltration and offers superior security
- Gasket behind escutcheon plate reduces air infiltration from the exterior
- Weep hole on exterior escutcheon plate prevents collection





**HEAD OFFICE & WINDOW
MANUFACTURING**



**DOOR DIVISION &
PREHANGING FACILITY**

WESTECK WINDOWS MFG INC

**HEAD OFFICE & WINDOW MANUFACTURING
8104 EVANS ROAD
CHILLIWACK, BC
CANADA, V2R 5R8**

**DOOR DIVISION & PREHANGING FACILITY
43887 PROGRESS WAY,
CHILLIWACK, BC
CANADA, V2R 0E6**

PHONE: 1-604-792-6700

FAX: 1-604-792-6714

TOLL FREE: 1-877-606-1166

**EMAIL: SALES@WESTECKWINDOWS.COM
WWW.WESTECKWINDOWS.COM**

SHOWROOMS

**VANCOUVER, BC
604-298-6700**

**KELOWNA, BC
250-862-3800**

**VICTORIA, BC
250-384-8881**

**COURTENAY, BC
250-334-8934**