



GARDINER'S GREEN TOWNHOMES

VICTORIA, BC

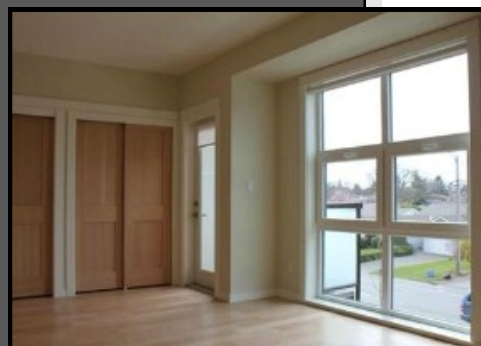
WESTECK
WINDOWS & DOORS

CASE STUDY

- EURO WINDOWS
- CASEMENT & SLIDING WINDOWS
- METAL CLAD & FIBERGLASS SWING DOORS

These 22 gorgeous 2 & 3 story west-coast contemporary townhomes are located in the heart of Gordon Head which is just a short walk to the University of Victoria.

These unique buildings required a variety of windows & door products to suit the design of the building.



PROJECT DETAILS

Project Name:	Gardiner's Green
Location:	Victoria, BC
Manufacturer:	Westeck Windows Mfg. Inc.
Architect:	Curtis Paxton Miles Architect
Builder/Contractor:	James Gardiner Construction
Completed:	Spring 2013

TECHNICAL SPECIFICATIONS

Window Products:	<ul style="list-style-type: none">• Tilt/Turn Curtain Wall• 4000 Series Casement Windows• 2000 Series Sliding Windows
Hardware:	Roto Operator w/ Multi-Point Hardware
Finishing:	Exterior Black DC7005
Number of Units:	140 Windows
Door System:	Prehung Swing Doors
Door Products:	<ul style="list-style-type: none">• Exterior Metal Clad Wood Swing Doors• Smooth Fiberglass Swing Doors• Textured Fiberglass Swing Doors
Finishing:	Exterior Black DC7005
Glazing:	LowE/Temp Argon & White Diffused Lami glass
Number of Units:	92 Doors

UNIQUE REQUIREMENTS

- Mix of 6 different window & door styles/products all manufactured & Prehung in our facilities in Chilliwack
- Windows & Doors exterior color match - Black Finish

Locations: Chilliwack (head office), Vancouver, Kelowna, Victoria, Nanaimo, Calgary & Seattle
1-877-606-1166 • sales@westeckwindows.com